

FORKLIFTCENTER B.V.

Hendrik Boone (Oceania & South East Asia)

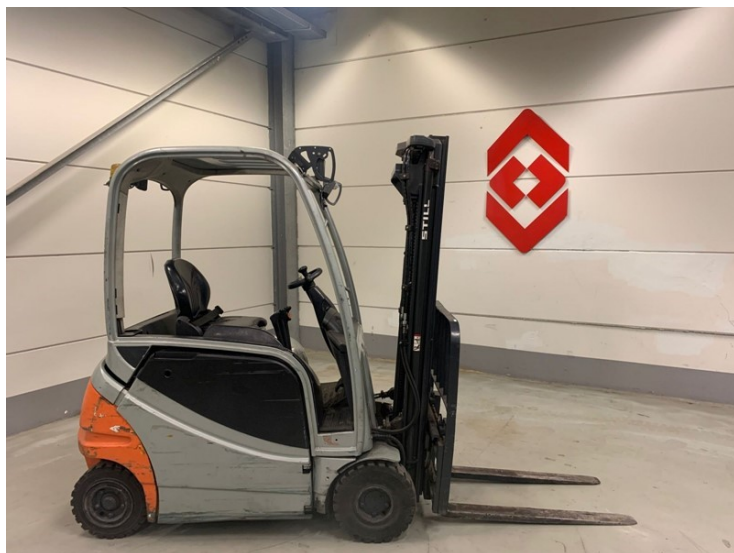
Cees Halling (Europe & Africa)

New South Wales, Australia

Amsterdam, Netherlands

E. sales@forkliftcenter.com, Ph. +31 (0)20 497 4101, Mob. +61 282 981

E. sales@forkliftcenter.com, Ph. +31 (0)20 497 4101



Still

RX20-16P

2016

Hornweg, Netherlands

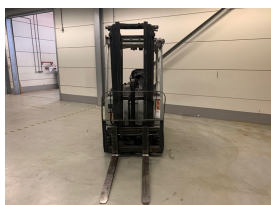
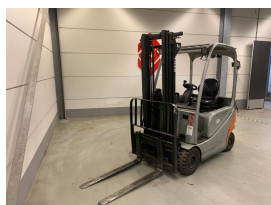
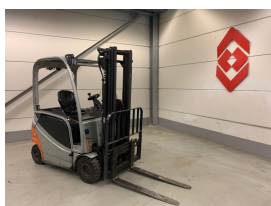
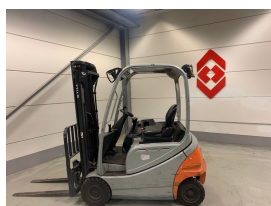
onQ-65141

FORKLIFTS - COUNTER BALANCE ELECTRIC
USED - SALE

Date Listed	27 Feb 2025
Reference	880009947
Machine Hours	9079
Power Type	Battery Electric
Lift Capacity	1,600 kg(3,527 lb)
Mast Type	Triplex (3 Stage)
Maximum Lift Height	5,050 mm(199 in)
Tyre Type	Solid / Puncture Proof

ADDITIONAL INFORMATION

Overall height: 2160 Cabin: no Cabin height: 2080 Center of gravity: 500 Fork length: 1100 Freelif: 1820 Accessories: Working lights, beacon, bluespot, sideshift



BETTER, SMARTER, MORE FOCUSED, EASY AS.

- Machinery-onQ Oceania is a platform for the sale and acquisition of both new & used mobile machinery in Oceania which includes Australasia and the Malay Archipelago.
- The platform features forklifts, warehouse equipment, container handlers, log handlers, aerial work platforms, port cranes, tow trucks, terminal tractors, industrial sweepers and forklift attachments.

This platform is produced by FORKLIFTACTION



