

## FORKLIFTCENTER B.V.

Hendrik Boone (Oceania & South East Asia)

Cees Halling (Europe & Africa)

New South Wales, Australia

Amsterdam, Netherlands

E. sales@forkliftcenter.com, Ph. +31 (0)20 497 4101, Mob. +61 282 981

E. sales@forkliftcenter.com, Ph. +31 (0)20 497 4101



**Unknown brand**  
**KALMAR-MAST-DCE150-12**  
**2001**

Hornweg, Netherlands

**onQ-66427**

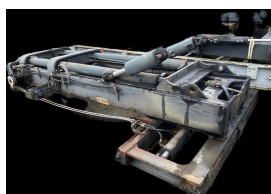
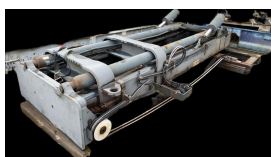
OTHER  
USED - SALE

**Date Listed** 27 Feb 2025

**Reference** A49191.1300

**ADDITIONAL INFORMATION**

Cabin: no Center of gravity: 0 Accessories: Used 2W550 KALMAR mast DCE 150-12 / OEM part No. A49191.1300, inclusive Tilting cylinders, Mast chains, Sideshift Tool carrier, working lights, length: 4160 mm, carriage width: 2450 mm, lower height: 4450 mm; FLC part No. AT.17.0001K1U; Lifting cylinders: Kalmar Article number 923961.0013



**BETTER, SMARTER, MORE FOCUSED, EASY AS.**

- Machinery-onQ Oceania is a platform for the sale and acquisition of both new & used mobile machinery in Oceania which includes

This platform is produced by FORKLIFTACTION



Australasia and the Malay Archipelago.

- The platform features forklifts, warehouse equipment, container handlers, log handlers, aerial work platforms, port cranes, tow trucks, terminal tractors, industrial sweepers and forklift attachments.

**Machinery-onQ is a Business Platform by ForkliftAction Media.**

<https://oceania.machinery-onq.com/machine-other-unknown-brand-kalmar-mast-dce150-12-2001-used-sale-netherlands/66427>

© ForkliftAction Media 2025