

F. UCHIYAMA & CO., LTD

Noboru Uchiyama

Yokohama, Japan

E. info@f-uchiyoama.com, Ph. +81 45 663 6677



Mitsubishi

FD200

1992

Yokohama, Japan

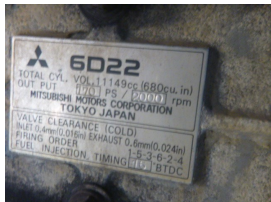
onQ-65304

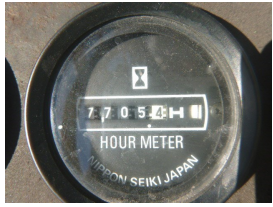
HEAVY LIFTERS & HANDLERS - HIGH CAPACITY FORKLIFTS
USED - SALE

Date Listed	16 Jul 2025
Serial Number	F11-10126
Machine Hours	7705
Power Type	Diesel
Lift Capacity	20,000 kg(44,092 lb)
Mast Type	Duplex (2 Stage)
Maximum Lift Height	3,000 mm(118 in)
Tyre Type	Pneumatic
Machine Height	3,930 mm(155 in)
Machine Condition	Condition GOOD ***

ADDITIONAL INFORMATION

2440mm Fork





BETTER, SMARTER, MORE FOCUSED, EASY AS.

- Machinery-onQ Oceania is a platform for the sale and acquisition of both new & used mobile machinery in Oceania which includes Australasia and the Malay Archipelago.
- The platform features forklifts, warehouse equipment, container handlers, log handlers, aerial work platforms, port cranes, tow trucks, terminal tractors, industrial sweepers and forklift attachments.

Machinery-onQ is a Business Platform by ForkliftAction Media.

This platform is produced by FORKLIFTACTION



<https://oceania.machinery-onq.com/machine-heavy-lifters-handlers-high-capacity-forklifts-mitsubishi-fd200-1992-used-sale-japan/65304>
© ForkliftAction Media 2025