

FORKLIFTCENTER B.V.

Hendrik Boone (Oceania & South East Asia)

Cees Halling (Europe & Africa)

New South Wales, Australia

Amsterdam, Netherlands

E. sales@forkliftcenter.com, Ph. +31 (0)20 497 4101, Mob. +61 282 981

E. sales@forkliftcenter.com, Ph. +31 (0)20 497 4101



Still
RX20-18PH
2014

Hornweg, Netherlands

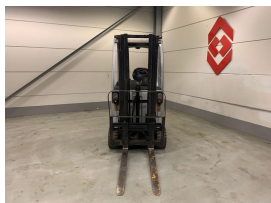
onQ-65938

FORKLIFTS - COUNTER BALANCE ELECTRIC
USED - SALE

Date Listed	27 Feb 2025
Reference	880009769
Machine Hours	9214
Power Type	Battery Electric
Lift Capacity	1,800 kg(3,968 lb)
Mast Type	Triplex (3 Stage)
Maximum Lift Height	4,830 mm(190 in)
Tyre Type	Solid / Puncture Proof

ADDITIONAL INFORMATION

Overall height: 2220 Cabin: no Cabin height: 2220 Center of gravity: 500 Fork length: 1200 Freelif: 1680 Accessories: Working lights, beacon, bluespot, sideshift



BETTER, SMARTER, MORE FOCUSED, EASY AS.

- Machinery-onQ Oceania is a platform for the sale and acquisition of both new & used mobile machinery in Oceania which includes Australasia and the Malay Archipelago.
- The platform features forklifts, warehouse equipment, container handlers, log handlers, aerial work platforms, port cranes, tow trucks, terminal tractors, industrial sweepers and forklift attachments.

This platform is produced by FORKLIFTACTION



Machinery-onQ is a Business Platform by ForkliftAction Media.

<https://oceania.machinery-onq.com/machine-forklifts-counter-balance-electric-still-rx20-18ph-2014-used-sale-netherlands/65938>

© ForkliftAction Media 2025